

MIRA VILLAS

DESIGNED BY **BENTLEY HOME**



DISTRICT 11, MBR CITY

Breathtaking views of Dubai's skyline and the serenity of a private lagoon create a perfect balance between urban convenience and natural beauty.



MIRA VILLAS

DESIGNED BY **BENTLEY HOME**

FACTS

- 36 fully furnished villas
- D11 district, Meydan, Dubai
- Crystal lagoon
- Bespoke gym
- Club House with F&B services





EXCLUSIVE SERVICES

- 24/7 Concierge
- 24/7 Security surveillance
- 24/7 Valet parking
- Housekeeping services
- Laundry services
- In-residence babysitting
- Grocery delivery
- Residence event catering
- Food Delivery

27 5-BEDROOM WATERFRONT VILLAS
7,212 square feet each

9 EXCLUSIVE 5-BEDROOM WATERFRONT MANSIONS
15,000 square feet each



BENTLEY HOME

The Bentley Home collection translates silhouettes and shapes synonymous with the British automotive legend into a language of impeccable Italian furniture.



BENTLEY

HOME



THREE FACES OF LUXURY

Each unit in Mira Villas designed by Bentley Home comes in one of three interior styles catering to your personal preferences.

TRADITIONAL



FORMAL



CONTEMPORARY



5 BED VILLA

7,212 square feet

4 main bedrooms on the first floor

1 guest bedroom on the ground floor

Lagoon view



5 BED VILLA
TRADITIONAL



5 BED VILLA
FORMAL



5 BED VILLA
CONTEMPORARY



5 BED MANSION

15,000 square feet

4 main bedrooms on the first floor

1 guest bedroom on the ground floor

Lagoon view



5 BED MANSION
TRADITIONAL



5 BED MANSION FORMAL



5 BED MANSION CONTEMPORARY



5 BED MANSION
PRIVATE GYM



5 BED MANSION
PRIVATE CINEMA





PRIVATE LAGOON

Every single unit enjoys a waterfront location and lagoon views.



BESPOKE GYM

The community features a custom-designed gymnasium by Technogym and a dedicated club house offering F&B services and a relaxed ambience.



SPACIOUS TERRACES

Enjoy sunbathing in the comfort of your home with private terraces.

READY TO MOVE IN

All units are handed over featuring household appliances by renowned brands.

- Dishes by Bernardaud
- Flatware by Christofle
- Home lighting by Lalique
- Bed linen by Frette
- Kitchen appliances by Gaggenau





LOWER GROUND FLOOR

FLOOR PLANS

5 BED VILLA

TRADITIONAL

670 SQ M / 7 212 SQ FT



GROUND FLOOR

FLOOR PLANS

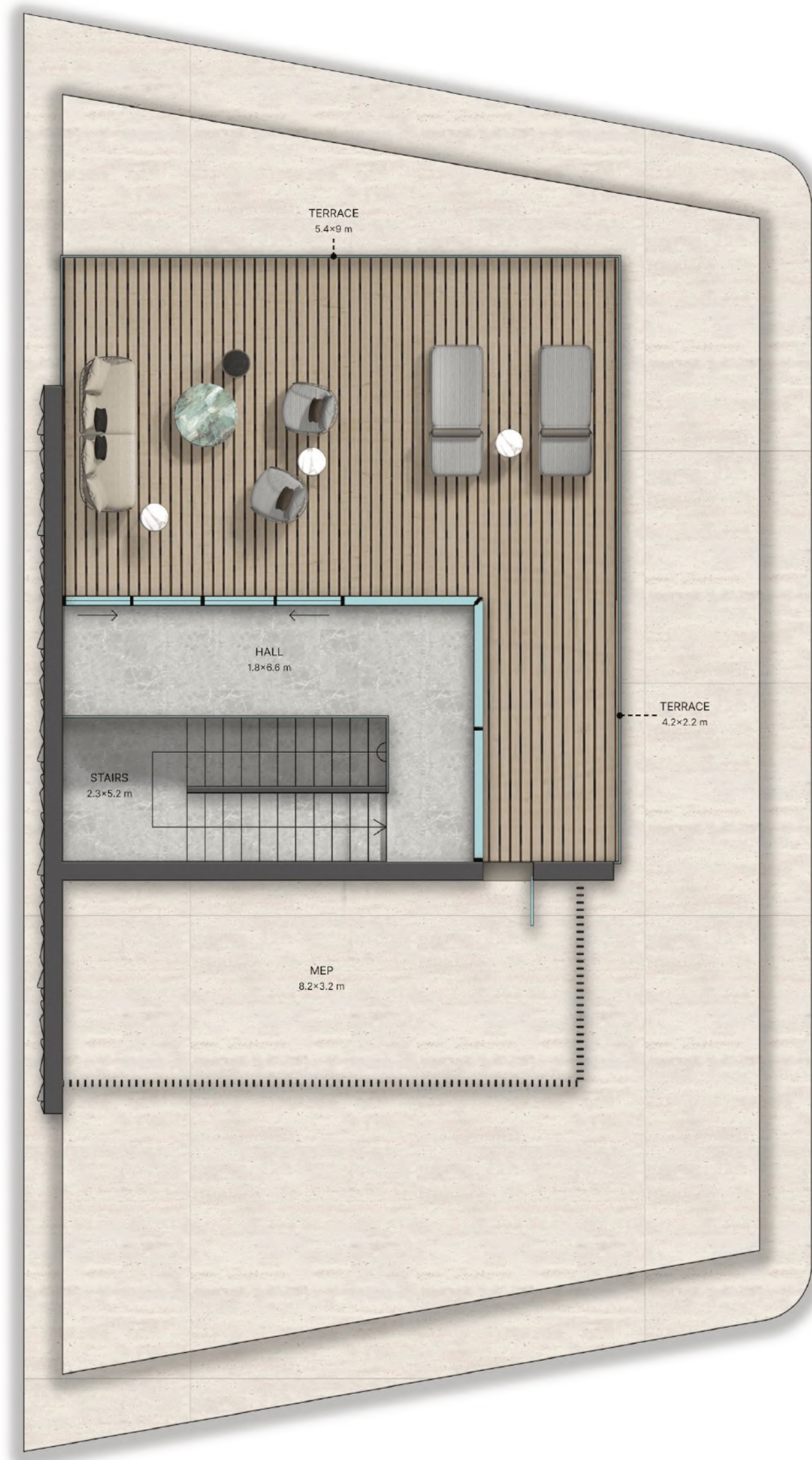
5 BED VILLA

TRADITIONAL

670 SQ M / 7 212 SQ FT



FIRST FLOOR



SECOND FLOOR



LOWER GROUND FLOOR

FLOOR PLANS

5 BED VILLA

FORMAL

670 SQ M / 7 212 SQ FT



GROUND FLOOR

FLOOR PLANS

5 BED VILLA

FORMAL

670 SQ M / 7 212 SQ FT



FIRST FLOOR



SECOND FLOOR



LOWER GROUND FLOOR

FLOOR PLANS

5 BED VILLA

CONTEMPORARY

670 SQ M / 7 212 SQ FT



GROUND FLOOR

FLOOR PLANS

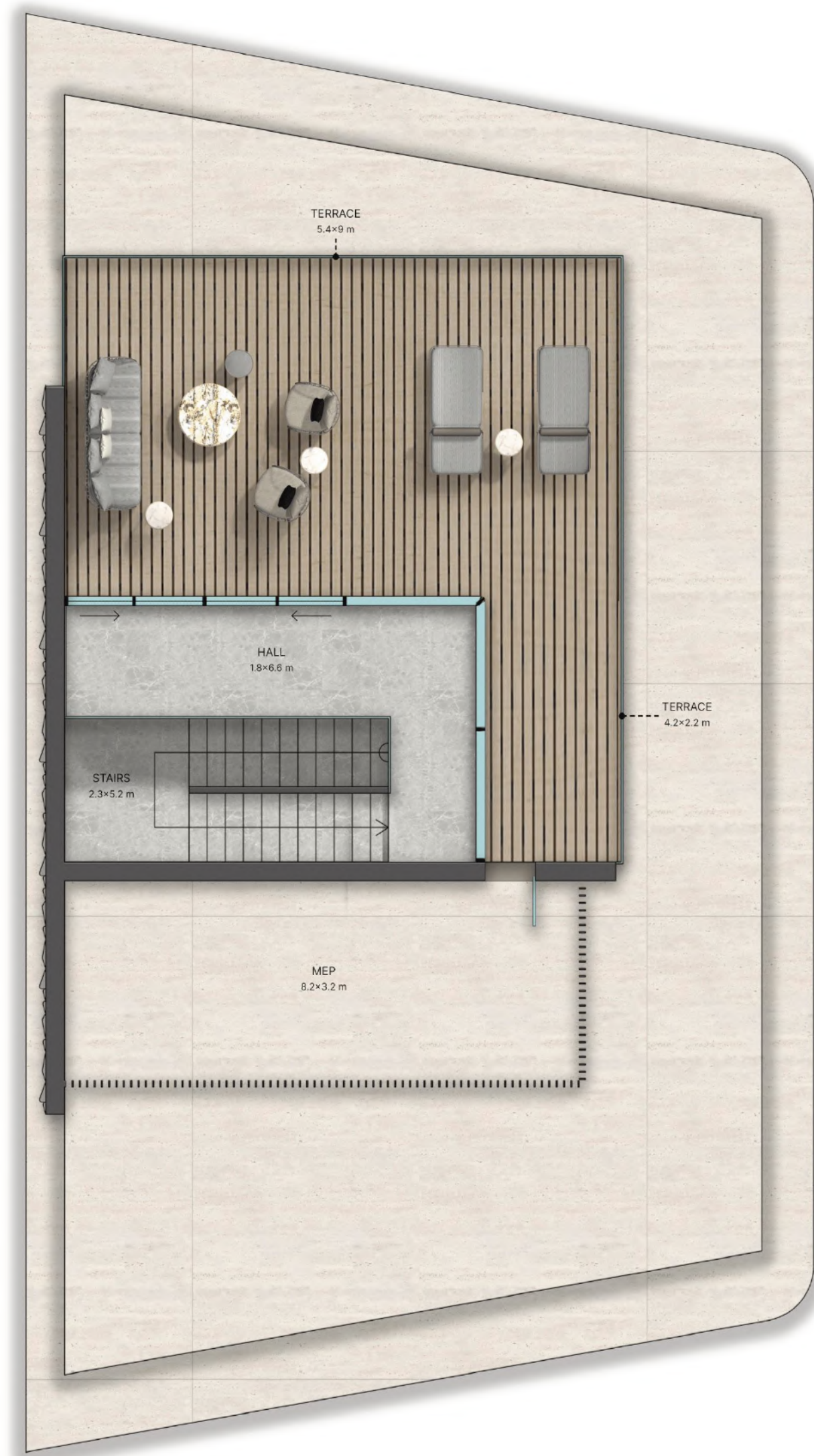
5 BED VILLA

CONTEMPORARY

670 SQ M / 7 212 SQ FT



FIRST FLOOR



SECOND FLOOR



LOWER GROUND FLOOR

FLOOR PLANS

5 BED MANSION

TRADITIONAL

1400 SQ M / 15 000 SQ FT



GROUND FLOOR

FLOOR PLANS

5 BED MANSION

TRADITIONAL

1400 SQ M / 15 000 SQ FT



FIRST FLOOR

FLOOR PLANS

5 BED MANSION

TRADITIONAL

1400 SQ M / 15 000 SQ FT



SECOND FLOOR



LOWER GROUND FLOOR

FLOOR PLANS

5 BED MANSION

FORMAL

1400 SQ M / 15 000 SQ FT



GROUND FLOOR

FLOOR PLANS

5 BED MANSION

FORMAL

1400 SQ M / 15 000 SQ FT



FIRST FLOOR

FLOOR PLANS

5 BED MANSION

FORMAL

1400 SQ M / 15 000 SQ FT



SECOND FLOOR



LOWER GROUND FLOOR

FLOOR PLANS

5 BED MANSION

CONTEMPORARY

1400 SQ M / 15 000 SQ FT



GROUND FLOOR

FLOOR PLANS

5 BED MANSION

CONTEMPORARY

1400 SQ M / 15 000 SQ FT



FIRST FLOOR

FLOOR PLANS

5 BED MANSION

CONTEMPORARY

1400 SQ M / 15 000 SQ FT



SECOND FLOOR